

## Antibody Data

<b>Product SKU:</b>	CAB14627	<b>Observed MW</b>	70kDa
<b>Applications:</b>	WB	<b>Calculated MW</b>	54kDa/67kDa
<b>Reactivity:</b>	Human, Mouse, Rat		

## Immunogen Information:

**Immunogen:** Recombinant fusion protein containing a sequence corresponding to amino acids 292-591 of human ZWILCH (NP\_060445.3).

**Gene ID:** 55055

**Swiss Prot:** Q9H900

**Synonyms:** ZWILCH; KNTC1AP; hZwilch; protein zwilch homolog

## Product Information:

**Source:** Rabbit

**Isotype:** IgG

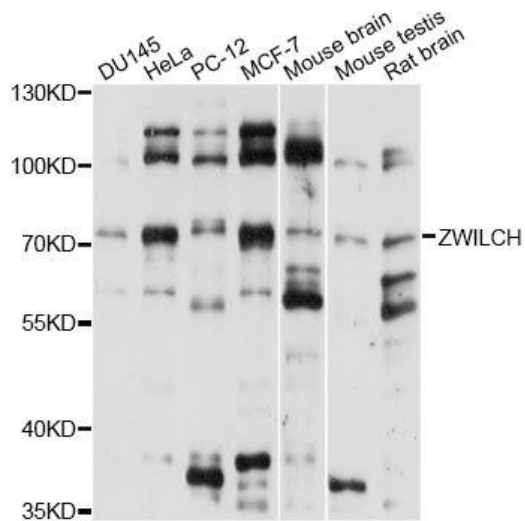
**Purification Method:** Affinity purification

**Storage:** Store at -20°C. Avoid freeze / thaw cycles. Buffer: PBS with 0.02% sodium azide, 50% glycerol, pH7.3.

**Recommended Dilution:** WB 1:500 - 1:2000

## Background:

## Images:



Western blot analysis of extracts of various cell lines, using ZWILCH antibody (CAB14627) at 1:1000 dilution. Secondary antibody: HRP Goat Anti-Rabbit IgG (H+L) (CABS014) at 1:10000 dilution. Lysates/proteins: 25ug per lane. Blocking buffer: 3% nonfat dry milk in TBST. Detection: ECL Basic Kit (AbGn00020). Exposure time: 5s.